

## SPECIFICATIONS

Measurement Principle	Nucleic Acid Fluorescence and Flow Cytometry
Measurement Parameter	24 report parameter (WBC, RBC, HGB, MCV, MCH, MCH-C, RDW-CW, RDW-SD, HCT, PLT, MPV, P-DW, PCT, P-LCR, BASO#, BASO%, NEUT#, NEUT%, EO#, EO%, LYMPH#, LYMPH%, MONO#, MONO%,) 4 research parameter (IG#, IG%, OTHER#, OTHER%) 4 Graphs (2D and 3D scattergram analysis, 3 histograms)
Throughput	80 T/H
Test Mode	CBC / CBC+DIFF
Sample Type	Whole Blood / Capillary Blood / Pre-Dilution Blood
Sample Volume	20 µl
Reagent	GD-5 (Diluent) LH-5 (HGB Lyse) LD-5 (DIFF Lyse) DD-5 (Dye) CC-5 (Clean Solution)
Power Requirement	100-240V ≤ 250VA, 50/60Hz
Dimensions	550 x 700 x 600 mm
Weight	55 kg

## LINEARITY RANGE

Parameter	Linear Measurement Range	Linear Tolerance	r
WBC	1.0 x 10 <sup>9</sup> /L ~ 10.0 x 10 <sup>9</sup> /L 10.1 x 10 <sup>9</sup> /L ~ 99.9 x 10 <sup>9</sup> /L	Less than ± 0.5 x 10 <sup>9</sup> /L Less than ± 5.0%	≥ 0.990
RBC	0.30 x 10 <sup>12</sup> /L ~ 1.00 x 10 <sup>12</sup> /L 1.01 x 10 <sup>12</sup> /L ~ 7.00 x 10 <sup>12</sup> /L	Less than ± 0.05 x 10 <sup>12</sup> /L Less than ± 5.0%	≥ 0.990
HGB	20g/L ~ 70g/L 71g/L ~ 240g/L	Less than ± 2/L Less than ± 3.0%	≥ 0.990
PLT	20 x 10 <sup>9</sup> /L ~ 100 x 10 <sup>9</sup> /L 101 x 10 <sup>9</sup> /L ~ 999 x 10 <sup>9</sup> /L	Less than ± 10 x 10 <sup>9</sup> /L Less than ± 10.0%	≥ 0.990

### Qualify Med Solutions Co., Ltd.

Address: 459 Rat Nimit, Samwa Tawan Ok,  
Klong Samwa, Bangkok, 10510

Tel: 02 1161270

Web: [www.qualifymeds.com](http://www.qualifymeds.com)

Email: [sales@qualifymeds.com](mailto:sales@qualifymeds.com)

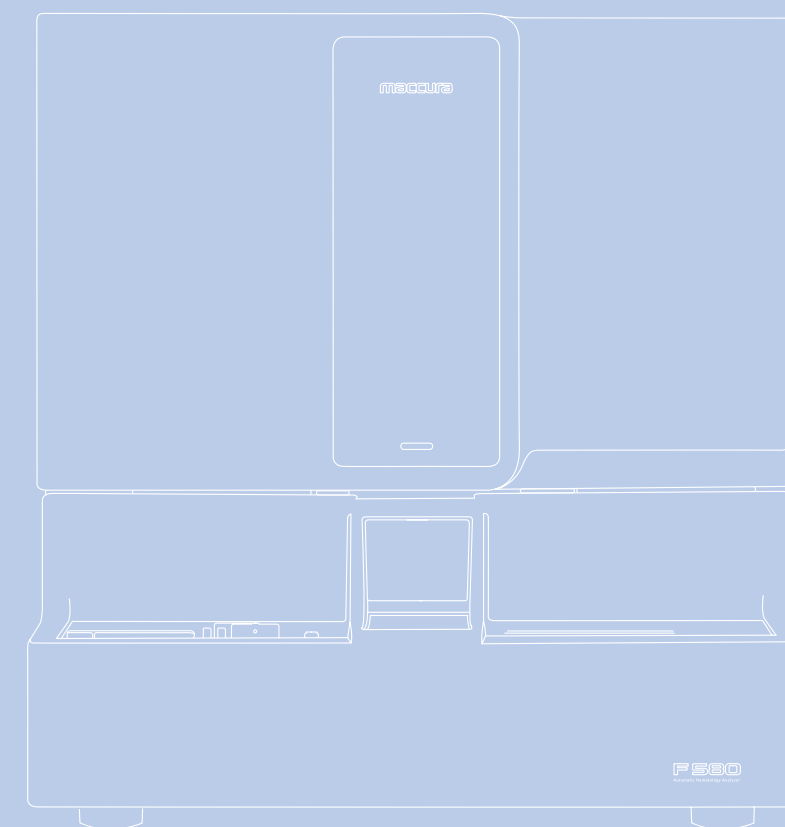


# TS80

maccura

### AUTOMATIC HEMATOLOGY ANALYZER

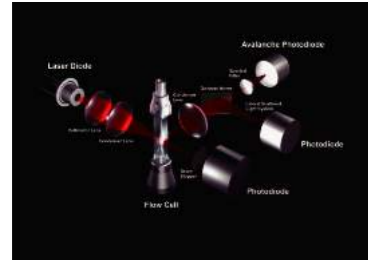
- 3rd generation technology
- 80 samples per hour
- Reliable performance for aging blood/abnormal sample



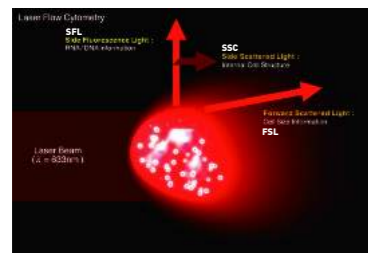
## Advanced Technology

### 3<sup>rd</sup> generation Tech

Fluorescence staining to Nucleic Acid



Special fluorescent staining solution will dye DNA or RNA blandly while 2nd Generation chemistry staining reagents will dye Enzymes/particles in cytoplasm. we know that different cell has different concentration of DNA or RNA , which cause the depth of dying is different. the more DNA or RNA , the stronger fluorescent signal. Since the nucleic acid is the most specific part of cell, so the 3rd Generation is more sensitive to distinguish different leukocyte, especially the abnormal cells

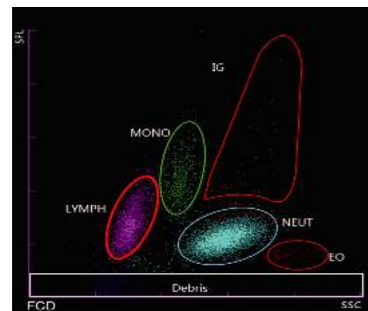


Combine 3rd Generation technology with flow cytometry, A single-cell stream quickly passes through a channel in the middle, and every passing cell is detected by three beams of light from three directions to get size, granularity and nucleic acid information

FSL (Forward Scattered Light) mainly reflects the size of the cells, SSC (Side Scattered Light) mainly reflects size and number of particle in cells SFL (Side Fluorescence Light) mainly reflects the concentration of nucleic acid

## Excellent performance

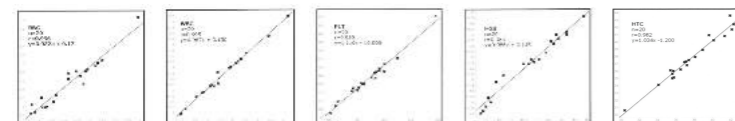
High sensitive to abnormal cells



Atypical lymphocyte and immature granular cell have strong nucleic acid fluorescent signal, after fluorescent staining, they are easier to be detected

Help to distinguish abnormal myeloid and gonorrhoea cells

## Trustable performance



good correlation with comparison system

## Powerful Functions

### Comprehensive flag information

- clinical flag
  - (1) enhanced abnormal cell detection capacity
  - (2) Help diagnosis such as hypochromia anemia, neutropenia, etc
- maintenance flag
  - (1) powerful debug function
  - (2) one click to remove error

### Multi-channels

- Independent Baso test channel
- Specid DIFF channel with blood Individual RBC/PLT channel

### High efficiency

- Through put 80samples/hour
- Auto-loader with 50sample position Individual STAT position
- Support open/close tube

### Test options

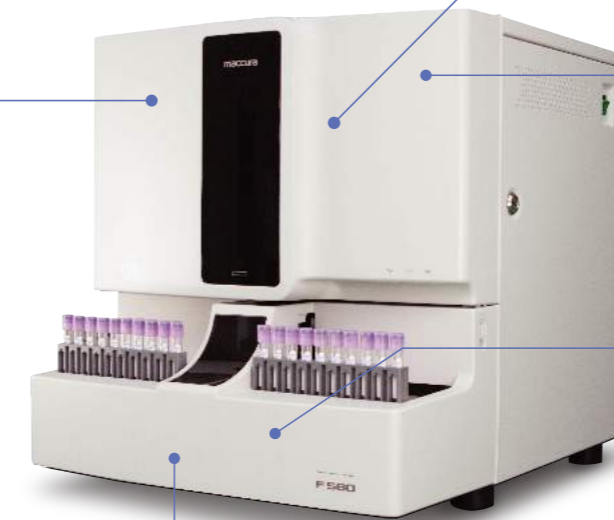
- Mode :CBC、CBC+DIFF
- Sample type :whole blood.capillary blood pre-dilution blood Auto sample dilution

### Easy-to-use software

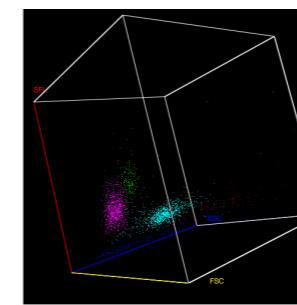
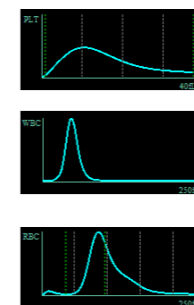
- Simple daily operation
  - (1)Visual and intuitive software interface
  - (2)Convenient data management

### Easy maintenance

- (1)one click to remove clog
- (2)powerful debug functions



## Smart graphical analysis



3D scattergram for accurate WBC differentiation and pathological sample flag  
Histograms for WBC/RBC/PLT